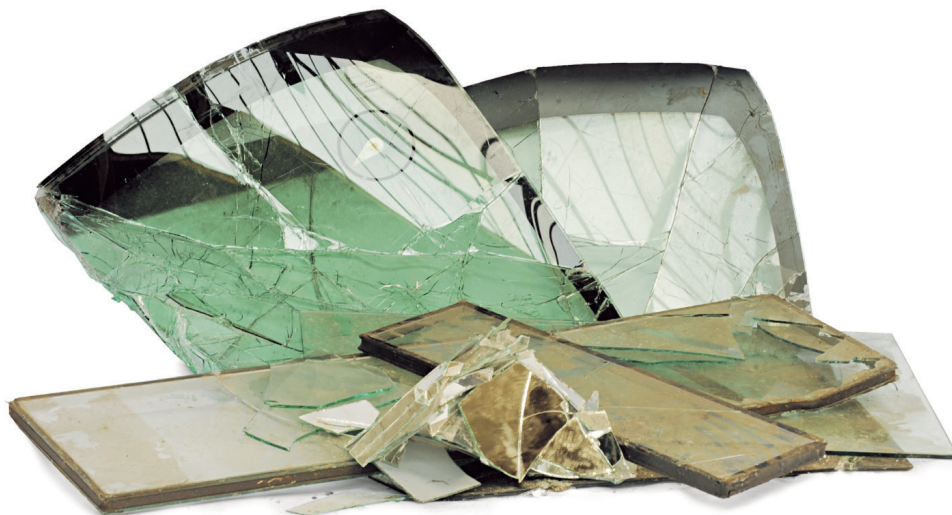


ISOMIX (FLAT)



SORTING GUIDE

YES PLEASE

- Double-glazed window units without wooden plastic frames (alu spacers permitted)
- Laminated glass
- Side mirrors from cars
- Mirror glass
- A few car windows - only windscreens and rear windows (max 5-10%)
- Wire mesh

NO THANKS

- Fire-resistant glass
- Building materials e.g. bricks, concrete, tiles, asbestos etc.
- Gravel
- Bottles
- Soil
- Ceramics, including ceramic hobs (e.g. Ceran), electric fuses, flip-tops
- Clay
- Organic material (foliage, wood etc.)
- Cardboard
- Paper
- Plastic
- Porcelain and china
- Sand
- Stones
- Other waste

Questions?

Please call **70 13 40 40** or visit
www.mariuspedersen.dk / www.helevejen.dk

Marius Pedersen

